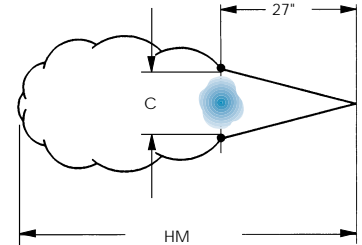


LARGE CAPACITIES



The set-ups shown in the tables on the next two pages are intended for use in large capacity applications. They are available only with basic bodies (MW).

Details are given in the illustration at the right. The maximum spray length is HM. The distance over which the spray remains well-defined is approximately 27 inches. Beyond this distance the spray becomes turbulent. The width of the spray at 27 inches is C.



The entries on the right-hand part of the tables show how HM and C vary as a function of selected values of liquid and air pressure (PL and PA) for the various set-ups, as applicable.

- Materials:
- Nickel-plated brass (T8)
 - 303 stainless steel (B1)
 - 316 stainless steel (B3)
 - PVC (D1)

BODY TYPES AND OPTIONS

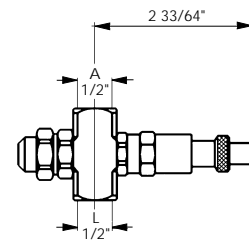
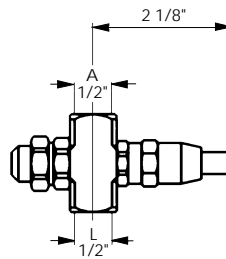
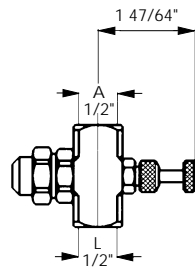
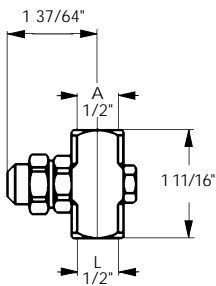
MW
BASIC BODY

A = AIR INLET (1/2")
L = LIQUID INLET (1/2")

MWB 1520 **B1** **B N**

- MATERIALS
- B1 = 303 STAINLESS STEEL
 - B3 = 316 STAINLESS STEEL
 - D1 = PVC
 - T8 = NICKEL-PLATED BRASS

OPTIONS	
A	STANDARD
B	SHUT-OFF NEEDLE
C	CLEANING NEEDLE
D	CLEANING AND SHUT-OFF NEEDLE



AIR-ATOMIZING NOZZLES

LF = LIQUID FLOW RATE (gph) PL = LIQUID PRESSURE (psi)
 A = AIR FLOW RATE (scfm) PA = AIR PRESSURE (psi)

INTERNAL MIX SET-UPS — LARGE CAPACITIES
 PRESSURE

SET-UP CODE	AIR PRESSURE (psi)												FLAT JET									
	28		30		32		34		36		40		44		48		52		PA	PL	C	HM
	LF	A	LF	A	LF	A	LF	A	LF	A	LF	A	LF	A	LF	A						
SUM 3184																		20	10	35"	18'	
Ln XMW 5201																		30	15	36"	19'	
An XMW 4120																		40	20	37"	21'	
																		50	25	38"	23'	
																		60	35	43"	27'	
																		70	40	46"	29'	
SUQ 3740	10	35.5	11.2	18	104	15.5	26	156	17.8	36	180	23.0	54	221	29.2		10	5	47"	13'		
	12	26.5	13.5	20	81.7	17.7	28	136	20.1	38	162	25.4	56	199	31.3		20	15	83"	15'		
				22	63.7	19.9	30	116	22.6	40	147	27.8	58	185	34.1		32	25	82"	17'		
				24	49.4	22.7	32	101	25.6	42	131	30.2	60	179	36.4		44	35	85"	19'		
							34	85.0	27.6	44	116	32.6	62	166	38.9		64	55	89"	21'		
							36	69.6	30.1	46	101	35.1	64	155	41.7							
							38	56.5	32.7	48	81.5	37.6	66	143	44.2							
							40	45.8	35.4	50	75.6	40.2	68	131	46.7							
										52	62.4	42.7	70	119	49.4							
													72	109	51.7							
													74	97.5	54.3							
													76	87.6	57.2							
Ln XMW 5202																						
An XMW 4121																						

SET-UP CODE	AIR PRESSURE (psi)												WIDE ANGLE FULL CONE									
	28		30		32		34		36		40		44		48		52		PA	PL	C	HM
	LF	A	LF	A	LF	A	LF	A	LF	A	LF	A	LF	A	LF	A						
SUL 3316							28	33.1	8.5	40	28.7	11.4	58	66.1	12.1	30	25	26 1/2"	22'			
Ln XMW 5201							30	19.9	10.9	42	15.6	13.8	60	42.1	15.1	40	35	26 1/2"	24'			
An XMW 4110													62	25.3	18.3	60	55	27"	28'			
SUL 3192	8	27.1	6.6	18	42.1	7.1	32	47.1	11.1	46	42.6	18.1	70	81.1	29.6	10	5	25 1/2"	20'			
	10	15.1	8.3	20	29.5	8.8	34	35.9	12.9	48	32.4	20.2	75	33.0	34.4	20	15	26 1/2"	26'			
	12	8.5	9.9	22	20.1	10.6	36	25.1	14.7	50	25.8	22.2	80	22.3	39.7	36	25	25 1/2"	21'			
				24	14.5	12.3	38	18.7	16.7	52	19.8	24.0				50	35	26 1/2"	24'			
							40	13.9	18.5	54	15.6	25.8				75	55	27"	27'			
Ln XMW 5201																						
An XMW 4111																						
SUL 3300	10	34.1	11.5	26	46.1	20.3	40	62.7	27.6	54	75.6	32.6	75	126	39.1	12	5	27"	26'			
	12	21.7	13.1	28	37.3	22.1	42	52.8	29.5	56	57.0	34.3	80	109	42.3	30	15	26 1/2"	24'			
	14	12.1	14.8	30	28.5	23.8	44	43.7	31.5	58	46.8	35.8	85	98.1	45.5	46	25	26"	23'			
				32	21.5	25.4	46	33.5	33.6	60	39.0	37.3				60	35	27"	28'			
				34	16.3	27.1	48	25.1	35.5	62	33.0	38.8				80	55	28"	30'			
							50	18.1	37.6	65	25.8	41.2										
Ln XMW 5201																						
An XMW 4112																						
SUL 3740	10	35.5	11.2	18	104	15.5	26	156	17.8	36	180	23.0	54	221	29.2	10	5	36"	11'			
	12	26.4	13.4	20	81.7	17.6	28	134	20.1	38	162	25.4	56	199	31.3	20	15	36"	16'			
				22	63.7	19.7	30	116	22.6	40	147	27.8	58	185	34.1	32	25	32"	20'			
				24	49.4	22.5	32	101	25.2	42	131	30.2	60	179	36.4	44	35	29"	22'			
							34	85.0	27.6	44	116	32.6	62	166	38.8	64	55	31"	25'			
							36	69.4	30.1	46	101	35.1	64	155	41.7							
							38	56.5	32.5	48	81.5	37.6	66	141	44.2							
							40	45.8	35.4	50	75.6	40.2	68	131	46.7							
										52	62.4	42.7	70	120	49.4							
													72	109	51.7							
													74	97.5	54.3							
													76	87.6	57.1							
Ln XMW 5202																						
An XMW 4113																						

SET-UP CODE	AIR PRESSURE (psi)												FULL CONE								
	28		30		32		34		36		40		44		48		PA	PL	C	HM	
	LF	A	LF	A	LF	A	LF	A	LF	A	LF	A	LF	A							
SUB 3230	18	9.1	12.5	28	31.8	15.0	38	58.1	17.4	48	80.0	19.3				20	5		22'		
	20	6.6	13.8	32	22.6	17.1	44	37.8	20.9	54	55.2	23.6				36	15		24'		
	22	5.4	14.8	36	16.0	19.4	50	24.6	24.9	60	40.0	27.5				50	25	10"	27'		
	24	4.2	15.7	38	13.3	20.4	54	19.7	27.6	66	30.0	32.1				60	35		30'		
Ln XMW 5201				40	11.2	21.6	58	16.1	30.1	72	23.3	37.0									
An XMW 4101				42	9.3	22.7	60	14.6	31.9	78	18.3	42.2									
SUB 3740	10	35.5	11.2	18	104	15.5	26	156	17.6	36	180	23.0	54	221	29.2	10	5	9"	23'		
	12	26.5	13.5	20	81.7	17.7	28	134	20.1	38	162	25.4	56	199	31.3	20	15	13"	21'		
				22	63.4	19.9	30	116	22.4	40	147	27.8	58	187	33.9	32	25	10"	37'		
				24	49.3	22.5	32	101	25.2	42	131	30.2	60	181	36.4	44	35	10"	41'		
							34	85.0	27.6	44	116	32.6	62	166	38.9	64	55	10"	47'		
							36	69.6	30.1	46	101	35.1	64	155	41.7						
							38	56.3	32.7	48	81.5	37.6	66	143	44.2						
							40	45.6	35.4	50	75.6	40.2	68	131	46.7						
										52	62.4	42.7	70	119	49.4						
													72	109	51.7						
													74	97.5	54.3						
													76	87.6	57.2						
Ln XMW 5202																					
An XMW 4102																					



AIR-ATOMIZING NOZZLES