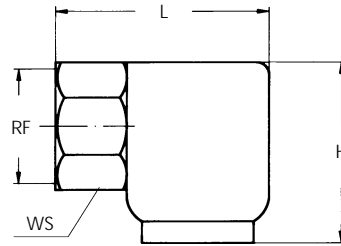
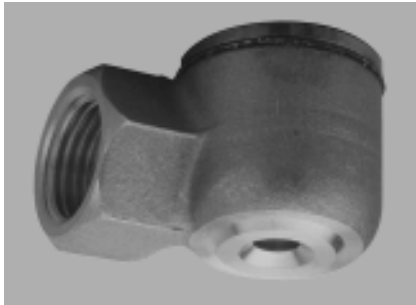


PA

HOLLOW-CONE NOZZLES



PA type nozzles produce a hollow-cone jet, with a nominal spray angle of 90°.

They offer excellent resistance to clogging because of their large and unobstructed flow passages.

Sizes up to 3/4" are constructed from a forged body, with an upper cover that can be removed for cleaning. Sizes from 1" and up are single-piece castings.

Connection: Female thread

Materials: See the table below.

Nozzle code	RF	D2	D3	Flow rates (gpm) at various pressures (psi)											Spray angle			Dimensions		
				3	5	7	10	20	30	40	60	80	100	150	7 psi	40 psi	80 psi	WS	H	L
PAS1170xxSN	3/8"	0.157	0.079	-	-	-	0.22	0.31	0.38	0.43	0.53	0.61	0.69	0.84	-	70	73	7/8"	11/16"	129/64"
PAT1260xxSN		0.157	0.118	-	-	-	0.33	0.47	0.57	0.66	0.81	0.94	1.0	1.3	-	80	90			
PAU1390xxSN		0.157	0.157	-	-	0.42	0.50	0.70	0.86	1.0	1.2	1.4	1.6	1.9	80	90	98			
PAU1670xxSN	1/2"	0.236	0.197	0.47	0.60	0.72	0.86	1.2	1.5	1.7	2.1	2.4	2.7	3.3	80	90	92	11/16"	11/2"	113/16"
PAU1850xxSN		0.236	0.236	0.59	0.77	0.91	1.1	1.5	1.9	2.2	2.7	3.1	3.4	4.2						
PAU2115xxSN		0.236	0.315	0.80	1.0	1.2	1.5	2.1	2.5	2.9	3.6	4.2	4.6	5.7						
PAU2220xxSN	3/4"	0.394	0.354	1.5	2.0	2.3	2.8	4.0	4.9	5.6	6.9	7.9	8.9	10.9	82	90	95	17/16"	157/64"	223/64"
PAU2320xxSN		0.394	0.472	1.6	2.1	2.5	2.9	4.2	5.1	5.9	7.2	8.3	9.3	11.4						
PAU2420xxSN		0.394	0.590	2.9	3.8	4.5	5.4	7.6	9.3	10.7	13.1	15.2	17.0	20.8						
PAU2730xxSN	1"	0.787x0.395	0.590	5.1	6.6	7.8	9.3	13.2	16.1	18.6	22.8	26.4	29.5	36.1	82	90	95	113/16"	223/64"	261/64"
PAU2970xxSN		0.787x0.395	0.709	6.8	8.8	10.4	12.4	17.5	21.4	24.8	30.3	35.0	39.1	47.9						
PAU3147xxSN	1 1/2"	1.18x0.63	0.787	10.3	13.3	15.7	18.8	26.5	32.5	37.5	46.0	53.1	59.3	72.7	82	90	98	23/8"	335/64"	321/32"
PAU3194xxSN		1.42x0.63	0.984	13.6	17.5	20.7	24.8	35.0	42.9	49.5	60.6	70.0	78.3	95.9						
PAU3244xxSN	2"	1.38x0.787	0.984	17.1	22.0	26.1	31.1	44.0	53.9	62.3	76.3	88.1	98.5	121	82	90	98	35/32"	423/32"	421/64"
PAU3294xxSN		1.38x0.787	1.181	20.6	26.5	31.4	37.5	53.1	65.0	75.0	91.9	106	119	145						
PAU3364xxSN	2 1/2"	1.57x0.985	1.378	25.4	32.8	38.9	46.5	65.7	80.5	92.9	114	131	147	180	82	90	98	315/16"	529/32"	459/64"
PAU3490xxSN		1.57x0.985	1.574	34	44	52	63	88	108	125	153	177	198	242						
PAU3605xxSN		1.57x0.986	1.772	42	55	65	77	109	134	154	189	218	244	299						

MATERIALS

BRASS (T1)	•	•	•	•																
CAST IRON (G1)			•	•	•	•	•													
316 SS (B3)				•	•	•	•													
	3/8"	1/2"	3/4"	1"	1 1/2"	2"	2 1/2"													