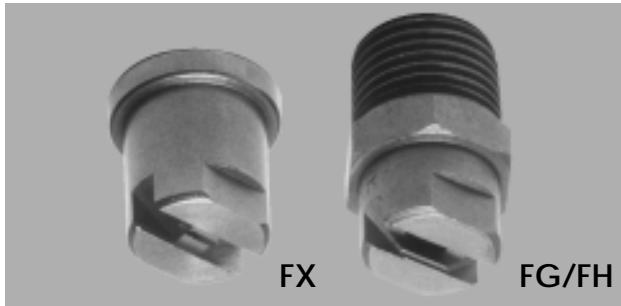


# F

## FLAT-JET NOZZLES

### HIGH PRESSURE WASHING



FX and FG/FH type flat-jet nozzles contain a specially designed inner profile that produces an even jet distribution, resulting in an effective and uniform cleaning action over the surface being treated.

They are used for high pressure washing applications such as car washing and industrial cleaning processes.

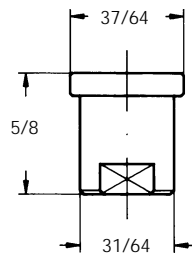
Connection: FG/FH (male thread)  
FX (flange)

Materials: Hardened 416 stainless steel

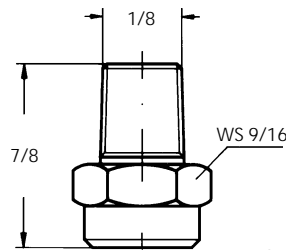
HYDRAULIC NOZZLES  
FLAT-JET

Nozzle code	D1	Flow rates (gpm) at various pressures (psi)												
		300	400	500	600	700	800	1000	1500	2000	2500	3000		
0°														
FXA														
FGA														
FHA														
● 1686 xxSN	0.044	0.83	1.0	1.1	1.2	1.3	1.4	1.5	1.9	2.1	2.4	2.6		
● 1930 xxSN	0.050	1.1	1.3	1.5	1.6	1.7	1.8	2.1	2.5	2.9	3.3	3.6		
● 2116 xxSN	0.056	1.4	1.6	1.8	2.0	2.1	2.3	2.6	3.1	3.6	4.1	4.4		
● 2138 xxSN	0.061	1.7	1.9	2.2	2.4	2.6	2.7	3.1	3.7	4.3	4.8	5.3		
● 2160 xxSN	0.065	1.9	2.2	2.5	2.7	3.0	3.2	3.5	4.3	5.0	5.6	6.1		
● 2181 xxSN	0.069	2.2	2.5	2.8	3.1	3.3	3.6	4.0	4.9	5.7	6.3	6.9		
● 2226 xxSN	0.078	2.7	3.2	3.5	3.9	4.2	4.5	5.0	6.1	7.1	7.9	8.7		
● 2341 xxSN	0.094	4.1	4.8	5.3	5.8	6.3	6.7	7.5	9.2	10.7	11.9	13.1		
● 2456 xxSN	0.109	5.5	6.4	7.1	7.8	8.4	9.0	10.1	12.3	14.3	15.9	17.5		
● 2682 xxSN	0.135	8.3	9.5	10.7	11.7	12.6	13.5	15.1	18.5	21.3	23.8	26.1		
15°														
FXB														
FGB														
FHB														
● 1686 xxSN	0.044	0.83	1.0	1.1	1.2	1.3	1.4	1.5	1.9	2.1	2.4	2.6		
● 1930 xxSN	0.050	1.1	1.3	1.5	1.6	1.7	1.8	2.1	2.5	2.9	3.3	3.6		
● 2116 xxSN	0.056	1.4	1.6	1.8	2.0	2.1	2.3	2.6	3.1	3.6	4.1	4.4		
● 2138 xxSN	0.061	1.7	1.9	2.2	2.4	2.6	2.7	3.1	3.7	4.3	4.8	5.3		
● 2160 xxSN	0.065	1.9	2.2	2.5	2.7	3.0	3.2	3.5	4.3	5.0	5.6	6.1		
● 2181 xxSN	0.069	2.2	2.5	2.8	3.1	3.3	3.6	4.0	4.9	5.7	6.3	6.9		
● 2226 xxSN	0.078	2.7	3.2	3.5	3.9	4.2	4.5	5.0	6.1	7.1	7.9	8.7		
● 2341 xxSN	0.094	4.1	4.8	5.3	5.8	6.3	6.7	7.5	9.2	10.7	11.9	13.1		
● 2456 xxSN	0.109	5.5	6.4	7.1	7.8	8.4	9.0	10.1	12.3	14.3	15.9	17.5		
● 2682 xxSN	0.135	8.3	9.5	10.7	11.7	12.6	13.5	15.1	18.5	21.3	23.8	26.1		
25°														
FXD														
FGD														
FHD														
● 1686 xxSN	0.044	0.83	1.0	1.1	1.2	1.3	1.4	1.5	1.9	2.1	2.4	2.6		
● 1930 xxSN	0.050	1.1	1.3	1.5	1.6	1.7	1.8	2.1	2.5	2.9	3.3	3.6		
● 2103 xxSN	0.053	1.2	1.4	1.6	1.8	1.9	2.0	2.3	2.8	3.2	3.6	3.9		
● 2116 xxSN	0.056	1.4	1.6	1.8	2.0	2.1	2.3	2.6	3.1	3.6	4.1	4.4		
● 2126 xxSN	0.058	1.5	1.8	2.0	2.2	2.3	2.5	2.8	3.4	3.9	4.4	4.8		
● 2138 xxSN	0.061	1.7	1.9	2.2	2.4	2.6	2.7	3.1	3.7	4.3	4.8	5.3		
● 2149 xxSN	0.063	1.8	2.1	2.3	2.6	2.8	2.9	3.3	4.0	4.7	5.2	5.7		
● 2160 xxSN	0.065	1.9	2.2	2.5	2.7	3.0	3.2	3.5	4.3	5.0	5.6	6.1		
● 2181 xxSN	0.069	2.2	2.5	2.8	3.1	3.3	3.6	4.0	4.9	5.7	6.3	6.9		
● 2204 xxSN	0.073	2.5	2.9	3.2	3.5	3.8	4.0	4.5	5.5	6.4	7.1	7.8		
● 2226 xxSN	0.078	2.7	3.2	3.5	3.9	4.2	4.5	5.0	6.1	7.1	7.9	8.7		
● 2341 xxSN	0.094	4.1	4.8	5.3	5.8	6.3	6.7	7.5	9.2	10.7	11.9	13.1		
● 2456 xxSN	0.109	5.5	6.4	7.1	7.8	8.4	9.0	10.1	12.3	14.3	15.9	17.5		
● 2682 xxSN	0.135	8.3	9.5	10.7	11.7	12.6	13.5	15.1	18.5	21.3	23.8	26.1		

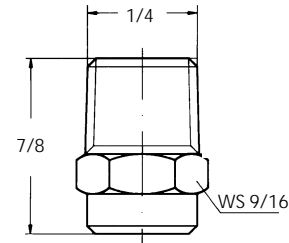
40°	Nozzle code		D	Flow rates (gpm) at various pressures (psi)											
	FGL	FHL		300	400	500	600	700	800	1000	1500	2000	2500	3000	
	FXL														
•	•	•	1686 xx SN	0.044	0.83	1.0	1.1	1.2	1.3	1.4	1.5	1.9	2.1	2.4	2.6
•	•	•	1930 xx SN	0.050	1.1	1.3	1.5	1.6	1.7	1.8	2.1	2.5	2.9	3.3	3.6
•	•	•	2103 xx SN	0.053	1.2	1.4	1.6	1.8	1.9	2.0	2.3	2.8	3.2	3.6	3.9
•	•	•	2116 xx SN	0.056	1.4	1.6	1.8	2.0	2.1	2.3	2.6	3.1	3.6	4.1	4.4
•	•	•	2126 xx SN	0.058	1.5	1.8	2.0	2.2	2.3	2.5	2.8	3.4	3.9	4.4	4.8
•	•	•	2138 xx SN	0.061	1.7	1.9	2.2	2.4	2.6	2.7	3.1	3.7	4.3	4.8	5.3
•	•	•	2149 xx SN	0.063	1.8	2.1	2.3	2.6	2.8	2.9	3.3	4.0	4.7	5.2	5.7
•	•	•	2160 xx SN	0.065	1.9	2.2	2.5	2.7	3.0	3.2	3.5	4.3	5.0	5.6	6.1
•	•	•	2181 xx sN	0.069	2.2	2.5	2.8	3.1	3.3	3.6	4.0	4.9	5.7	6.3	6.9
•	•	•	2204 xx SN	0.073	2.5	2.9	3.2	3.5	3.8	4.0	4.5	5.5	6.4	7.1	7.8
•	•	•	2226 xx SN	0.078	2.7	3.2	3.5	3.9	4.2	4.5	5.0	6.1	7.1	7.9	8.7
•	•	•	2341 xx SN	0.094	4.1	4.8	5.3	5.8	6.3	6.7	7.5	9.2	10.7	11.9	13.1
•	•	•	2456 xx SN	0.109	5.5	6.4	7.1	7.8	8.4	9.0	10.1	12.3	14.3	15.9	17.5
•	•	•	2682 xx SN	0.135	8.3	9.5	10.7	11.7	12.6	13.5	15.1	18.5	21.3	23.8	26.1



FX



FG



FH

FX nozzle tips are supplied complete with an inner flow-straightener, which reduces flow turbulence and assures optimum impact.

