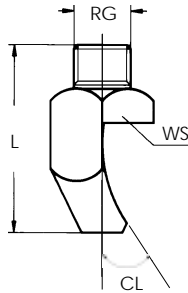


K

FLAT-JET NOZZLES

HIGH IMPACT



These K type nozzles are designed to concentrate the energy of the jet within a narrow angle. This results in very high impact pressures. K type nozzles are commonly used in a variety of washing processes.

Connection: Male thread

Materials: Brass (T1)
303 stainless steel (B1)
316 stainless steel (B3) on request

Nozzle code	RG	D	Flow rates (gpm) at various pressures (psi)								Spray angle			Dimensions		
			15	20	30	40	60	80	100	150	15	40	100	L	WS	CL
			psi	psi	psi	psi	psi	psi	psi	psi	psi	psi	psi	psi	psi	psi
KPB 1390 xx SN	1/4"	0.075	-	0.70	0.86	1.0	1.2	1.4	1.6	1.9	-	15	23	157/64"	5/8"	22
KPB 1780 xx SN		0.102	-	1.4	1.7	2.0	2.4	2.8	3.1	3.9	-	15	19	21/8"		19
KQB 2117 xx SN	3/8"	0.126	1.8	2.1	2.6	3.0	3.7	4.2	4.7	5.8	6	15	24	253/64"	3/4"	25
KQB 2156 xx SN		0.146	2.4	2.8	3.4	4.0	4.9	5.6	6.3	7.7	8	15	21	35/8"	7/8"	18
KQB 2195 xx SN		0.232	3.0	3.5	4.3	5.0	6.1	7.0	7.9	9.6	9	15	20	335/64"	7/8"	15
KRB 2230 xx SN	1/2"	0.181	3.6	4.2	5.1	5.9	7.2	8.3	9.3	11.4	10	15	19	459/64"	1"	14
KRB 2310 xx SN		0.209	4.8	5.6	6.9	7.9	9.7	11.2	12.5	15.3	11	15	18	51/8"		
KRB 2390 xx SN		0.232	6.1	7.0	8.6	10.0	12.2	14.1	15.7	19.3	11	15	18	525/64"		
KSB 2780 xx SN	3/4"	0.330	12.2	14.1	17.2	19.9	24.4	28.2	31.5	38.6	12	15	18	733/64"	19/32"	14
KPD 2156 xx SN	1/4"	0.146	2.4	2.8	3.4	4.0	4.9	5.6	6.3	7.7	15	25	34	29/16"	3/4"	25
KOH 1160 xx SN	1/8"	0.047	0.25	0.29	0.35	0.41	0.50	0.58	0.65	0.79	20	35	41	29/32"	7/16"	40
KPH 1390 xx SN	1/4"	0.075	0.61	0.70	0.86	1.0	1.2	1.4	1.6	1.9	18	35	39	129/64"	21/32"	36
KPH 1780 xx SN		0.102	1.2	1.4	1.7	2.0	2.4	2.8	3.1	3.9	24	35	40	121/32"	3/4"	40
KQH 1780 xx SN	3/8"	0.102	1.2	1.4	1.7	2.0	2.4	2.8	3.1	3.9	18	35	39	111/16"	3/4"	30
KQH 1980 xx SN		0.114	1.5	1.8	2.2	2.5	3.1	3.5	4.0	4.8	24	35	40	159/64"	3/4"	28
KQH 2117 xx SN		0.130	1.8	2.1	2.6	3.0	3.7	4.2	4.7	5.8	26	35	41	23/64"	3/4"	28
KQH 2156 xx SN		0.146	2.4	2.8	3.4	4.0	4.9	5.6	6.3	7.7	28	35	38	29/32"	7/8"	26
KQH 2195 xx SN		0.161	3.0	3.5	4.3	5.0	6.1	7.0	7.9	9.6	31	35	38	233/64"	7/8"	23
KRH 2230 xx SN	1/2"	0.177	3.6	4.2	5.1	5.9	7.2	8.3	9.3	11.4	29	35	39	27/8"	1"	27
KRH 2310 xx SN		0.209	4.8	5.6	6.9	7.9	9.7	11.2	12.5	15.3	26	35	40	33/16"		24
KRH 2390 xx SN		0.232	6.1	7.0	8.6	10.0	12.2	14.1	15.7	19.3	26	35	40	31/2"		19
KSH 2630 xx SN	3/4"	0.295	9.8	11.4	13.9	16.1	19.7	22.7	25.4	31.1	26	35	40	431/64"	19/32"	23
KSH 2780 xx SN		0.330	12.2	14.1	17.2	19.9	24.4	28.2	31.5	38.6	25	35	40	413/16"		22
KQL 2156 xx SN	3/8"	0.146	2.4	2.8	3.4	4.0	4.9	5.6	6.3	7.7	31	40	50	223/64"	7/8"	35
KQL 2195 xx SN		0.161	3.0	3.5	4.3	5.0	6.1	7.0	7.9	9.6	31	40	49	233/64"	1"	33
KQL 2230 xx SN		0.177	3.6	4.2	5.1	5.9	7.2	8.3	9.3	11.4	32	40	49	253/64"	1"	33
KQL 2270 xx SN		0.197	4.2	4.9	6.0	6.9	8.4	9.7	10.9	13.3	32	40	49	261/64"	1"	29
KQL 2310 xx SN		0.205	4.8	5.6	6.9	7.9	9.7	11.2	12.5	15.3	32	40	48	31/32"	1"	26
KQL 2350 xx SN		0.224	5.5	6.3	7.7	8.9	10.9	12.6	14.1	17.3	34	40	44	31/32"	1"	28
KQL 2390 xx SN		0.236	6.1	7.0	8.6	10.0	12.2	14.1	15.7	19.3	35	40	44	327/64"	1"	28
KPN 1390 xx SN	1/4"	0.075	0.61	0.70	0.86	1.0	1.2	1.4	1.6	1.9	34	50	60	17/32"	5/8"	60
KPN 2156 xx SN		0.146	2.4	2.8	3.4	4.0	4.9	5.6	6.3	7.7	39	50	60	127/32"	3/4"	45
KQN 1980 xx SN	3/8"	0.114	1.5	1.8	2.2	2.5	3.1	3.5	4.0	4.8	42	50	59	139/64"	3/4"	50
KQN 2156 xx SN		0.146	2.4	2.8	3.4	4.0	4.9	5.6	6.3	7.7	39	50	60	127/32"	3/4"	45
KQN 2230 xx SN		0.181	3.6	4.2	5.1	5.9	7.2	8.3	9.3	11.4	42	50	53	211/64"	1"	37
KQN 2390 xx SN		0.236	6.1	7.0	8.6	10.0	12.2	14.1	15.7	19.3	43	50	55	253/64"	19/32"	40
KQN 2490 xx SN		0.263	7.7	8.8	10.8	12.5	15.3	17.7	19.8	24.2	38	50	59	253/64"	19/32"	38
KQN 2630 xx SN		0.295	9.8	11.4	13.9	16.1	19.7	22.7	25.4	31.1	44	50	55	253/64"	19/32"	37
KQN 2780 xx SN		0.330	12.2	14.1	17.2	19.9	24.4	28.2	31.5	38.6	46	50	53	253/64"	19/32"	32

KSM 2390 D8



High impact K nozzles are often used in surface pre-treatment plants.

A Kynar molded version, specifically designed for this application, delivers the same performance as standard high impact K nozzles but has enhanced resistance to chemical attack. It is supplied with a safety locknut.