

### STATIONARY WASHERS

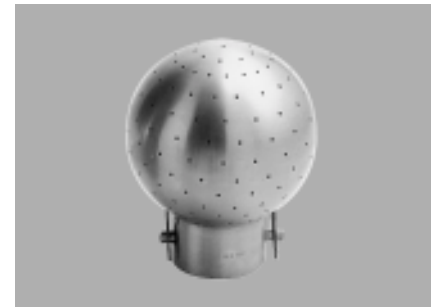
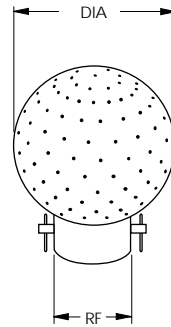
#### UAA

The **UAA** type tank washing nozzles are a simple yet effective solution for many applications involving smaller size tanks. They are useful in those applications involving tanks of limited size and residues consisting of liquids or non-sticking powders.

The nozzles are fabricated with a series of orifices uniformly distributed over the surface of a spherically shaped shell. The outlet orifices are relatively large making it possible to achieve high flow rates at low pressures.

Connection: Female thread  
Pipe clip

Materials: 316 stainless steel



Nozzle code	RF	DIA	Flow rates (gpm) at various pressures (psi)			WR
			15	22	30	
UAA 1228 B3	1/4"	11/8"	8	10	12	40
UAA 2040 B3C	13/16"	19/16"	17	20	24	150
UAA 2041 B3C	13/16"	19/16"	22	27	32	185
UAA 2465 B3	3/4"	29/16"	58	72	82	50
UAA 2050 B3C	13/16"	2"	26	30	35	100
UAA 2050 B3	1/2"	2"	24	29	34	95
UAA 2650 B3C	1"	2"	32	39	45	170
UAA 2665 B3C	1"	29/16"	69	85	98	70
UAA 2666 B3C	1"	29/16"	38	46	54	130
UAA 3065 B3C	11/16"	29/16"	79	64	112	95
UAA 3066 B3C	11/16"	29/16"	34	42	49	105
UAA 3865 B3C	1 1/2"	29/16"	83	102	118	105
UAA 3690 B3C	1 7/16"	3 1/2"	107	131	151	80
UAA 3850 B3C	1 1/2"	2"	29	36	41	80
UAA 3865 B3C	1 1/2"	29/16"	83	102	118	105
UAA 3990 B3	1 1/4"	3 1/2"	132	161	186	120
UAA 5812 B3C	2 1/4"	4 3/4"	84	103	118	80

The wetting radius, WR is measured at 15 psi.

### SINGLE-AXIS ROTARY WASHERS

#### UBB

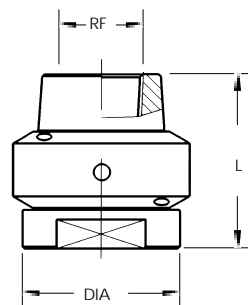
**UBB** type Teflon rotary nozzles utilize the reaction forces generated by the jets to produce the rotational motion, which assures that the walls of the tank are thoroughly impacted by the spray.

The simple two-piece design assures a long service life. The FDA-approved, chemically resistant Teflon material makes these nozzles suitable for most sanitary applications and for applications involving corrosive chemicals.

The UBB series is available both with a standard threaded connection and with a pipe clip for use, such as in the food industry, where frequent cleaning is necessary.

Connection: Female thread  
Pipe clip

Materials: Teflon (PTFE)



Nozzle code	RF	Flow rates (gpm) at various pressures (psi)				Angle AA	Max. Throw MT	Weight W	Dimensions	
		30	45	75	105				L	DIA
UBB 2319 E1	1/2"	7	8			360	120"	0.24	23/8"	23/8"
UBB 2320 E1	3/4"	7	8			360	120"	0.24	23/8"	23/8"
UBB 3120 E1	3/4"	28	32	46	57	360	120"	0.35	23/8"	23/8"
UBB 3198 E1	1"	42	52	72	85	360	110"	0.53	21/2"	23/4"