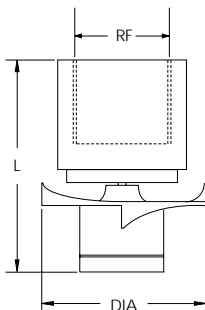


UBD/UBE

TANK WASHING

SINGLE-AXIS ROTARY WASHERS



The **UBD** and **UBE** rotary tank washing nozzles operate by liquid being injected under pressure through an annular series of holes and striking a specially designed disk-like free-spinning structure whose curvature is such that the impinging liquid causes the disk to rotate, flinging off drops in the process. The bearing surfaces are Teflon, which promotes long-term reliability.

This series of nozzles produces smaller drops and develops less impact than some other types of single-axis rotary nozzles (e.g. UBC). However, there are distinct advantages in applications where the cleaning does not involve hard-to-remove residues. The washing cycle is generally short compared to other designs so that liquid usage is minimized. Moreover, the orifices through which the liquid flows are quite large, minimizing clogging.

The **UBD** series designates nozzles made from 316 stainless steel. The **UBE** types are fabricated from Teflon.

Connection: Female thread (suffix K)
Clip (suffix H)

Materials: 316 stainless steel (UBD)
Teflon (UBE)

Nozzle code	RF	Flow rates (gpm) at various pressures (psi)				Angle AA	Direction	Max. Throw MT	Dimensions	
		15	30	45	60				L	DIA
UBD 2520 B3 AK	1/4"	8	11	14	16	360	--	108"	23/4"	11/8"
UBD 2520 B3 BK		8	11	14	16	180	UP	108"		
UBD 2520 B3 CK		8	11	14	16	180	DOWN	108"		
UBD 2870 B3 AK	3/4"	13	19	23	27	360	--	108"	21/4"	11/2"
UBD 2530 B3 AK		8	11	14	16	360	--	108"		
UBD 2530 B3 CK		8	11	14	16	180	DOWN	108"		
UBD 3125 B3 AK	1"	19	27	33	38	360	--	120"	3"	2"
UBD 2780 B3 AK		12	17	21	24	360	--	108"		
UBD 2780 B3 BK		12	17	21	24	180	UP	108"		
UBD 2780 B3 CK		12	17	21	24	180	DOWN	108"		
UBD 3210 B3 AK	1 1/2"	32	45	55	64	360	--	120"	4"	23/4"
UBD 3210 B3 AH		32	45	55	64	360	--	120"		
UBD 3140 B3 AK		21	30	37	43	360	--	120"		
UBD 3140 B3 BK		21	30	37	43	180	UP	120"		
UBD 3140 B3 CK		21	30	37	43	180	DOWN	120"		

Nozzle code	RF	Flow rates (gpm) at various pressures (psi)				Angle AA	Direction	Max. Throw MT	Dimensions	
		15	30	45	60				L	DIA
UBE A087 E1 AK	3/4"	13	19	23	27	360	--	108"	21/4"	11/2"
UBE A087 E1 BK		13	19	23	27	180	UP	108"		
UBE A087 E1 CK		13	19	23	27	180	DOWN	108"		
UBE A052 E1 AK		8	11	14	16	360	--	108"		
UBE A125 E1 AK	1"	19	27	33	38	360	--	108"	3"	2"
UBE A078 E1 AK		12	17	21	24	360	--	108"		
UBE A078 E1 BK		12	17	21	24	180	UP	108"		
UBE A078 E1 CK		12	17	21	24	180	DOWN	108"		
UBE A210 E1 AK	1 1/2"	32	45	55	64	360	--	120"	4"	23/4"
UBE A140 E1 AK		21	30	37	43	360	--	120"		
UBE A140 E1 BK		21	30	37	43	180	UP	120"		
UBE A140 E1 CK		21	30	37	43	180	DOWN	120"		

Note:

These tank washing nozzles are available in three (3) different spray patterns as follows:

- 360°
- 180° spray up
- 180° spray down

The next to last letter in the code designates the pattern for each nozzle; A = 360°; B = 180° up; C = 180° down.